



AK GLOBAL
— INDUSTRIES —

One step solutions

AK GLOBAL INDUSTRIES

ON DEMAND PIPING MATERIALS READILY AVAILABLE
FOR QUICK, EFFICIENT DELIVERIES ACROSS THE
GLOBE....



Manufacturer & Suppliers

Stainless Steel, Carbon Steel, Alloys Steel & High Nickel Alloy
Pipe, Tubes and Pipe Fitting, Sheets, Plates, Rods, fastener, Ferrous and
Non-Ferrous Metal, IBR Materials etc.

Contact us

Krishna Panday, Mob: +91 9225575690

Email: sales@akglobalindustries.com, info@akglobalindustries.com

Website: akglobalindustries.com



ABOUT US

AK Global Industries is a trusted manufacturer and supplier of industrial products, specializing in PIPES, stainless steel and carbon steel flanges, fittings. With a commitment to quality and reliability, we serve clients across global markets, delivering precision-engineered products that meet international standards.

Mission & Vision

Mission: To provide high-quality steel products and export solutions with a focus on customer satisfaction, timely delivery, and competitive pricing.

Vision: To be recognized as a leading global stockiest and suppliers of flanges, fittings, and pipes, known for excellence, integrity, and long-term partnerships.

Products & Services

We offer a wide range of products designed to meet diverse industrial needs:

- Pipes & Tubes (Seamless & Welded)
- Butt Weld Fittings / Forged Fittings
- Stainless Steel Flanges
- Carbon Steel Flanges
- Customized Solutions

Quality Assurance

All products are sourced from certified manufacturers.

Compliance with international standards (ASTM, ASME, DIN, EN, etc.).

Each shipment / consignments undergoes strict quality checks and full documentation.

Focus on durability, accuracy and customer satisfaction.

Why Choose Us

Extensive product range under one roof.

Competitive pricing with no compromise on quality.

Timely and reliable delivery worldwide.

Strong global sourcing and logistics expertise.

Dedicated customer support.

Contact Us

AK Global Industries, Mr. Krishna Pandey

Mob: +91 9225575690

Email: sales@akglobalindustries.com

Website: akglobalindustries.com



REFINERY, PETROCHEMICAL & CHEMICAL



CEMENT



POWER & STEEL



FERTILIZERS & SUGAR



PHARMACEUTICAL



OIL & GAS INDUSTRIES



FOOD & BEVERAGE INDUSTRIES



PAPER & PULP



OTHERS

Manufacturer & Suppliers

Stainless Steel, Carbon Steel, Alloys Steel & High Nickel Alloy
Pipe, Tubes and Pipe Fitting, Sheets, Plates, Rods, fastener, Ferrous and
Non-Ferrous Metal, IBR Materials etc.

BUTTWELD FITTINGS

Standards:

ASME / ANSI B16.9, B16.28 & MSS SP-95-43 / BS3799, IBR

Stainless Steel & Duplex Steel Fittings

Size : Upto 24" NB/ Welded Upto 64"

Schedule : 10S/40S/80S/160S/XXS

Stainless Steel : ASTM A 403 WP - TP 304/304L/304H/316/316L/ 316H / 316Ti / 309 / 310 / 317L / 321 / 347/904L

Duplex Steel : ASTM A 815-UNS 531803, 532750, 532760, 532205

Alloy Steel, Carbon Steel & LTCS Fittings

Size : Upto 24" NB/ Welded Upto 64"

Schedule : 10/40/60/XS/80/100/120/140/160/XXS

Alloy Steel : ASTM A 234 WPB - WPS, WP9, WPII, WPI2, WP22, WP91

Carbon Steel : ASTM A234 WPB, A420 WPL3, A420 WPL6, MSS-SP-75WPHY 42/46/52



SOCKET WELD / FORGED FITTINGS

Stainless Steel & duplex Steel forged Fittings

Standard : ANSI / ASME B16.11, B16.9, MSS SP-97, BS 3799, IBR

Size : ½"NB to 4" NB, (Socketweld& Threaded)

Class : 3000#, 6000#, 9000#

Stainless Steel : ASTM ATP 304/304L/304H/316/316L/316H /316Ti/ 309 / 310 /317L/321/347/904L

Duplex Steel : ASTM A 815- UNS 531803, 532750, 532760, 532205

Alloy Steel, Carbon Steel & LTCS Forged Fittings

Size : ½"NB to 4" NB, (Socket weld & Threaded)

Class : 3000#, 6000#, 9000#

Alloy Steel : ASTM A 182-FS, F9, F11, F12, F22 & F91

Carbon Steel : ASTM A 106 Gr. A/B/C

Low temp. CS : A 350 LF2

FLANGES

Stainless Steel & Duplex Steel Flanges

Size : ½"NB to 72" NB, ANSI / ASME B 16.5

Class : 150#,300#,600#,900#, 1500#,2500#

Stainless Steel : ASTM ATP 304/304L/304H/316/316L/ 316H / 316Ti/ 309 / 310 / 317L /321/ 347/ 904L

Duplex Steel : ASTM A 815-UNS S31803, S32750,S32760, S32205

Alloy Steel, Carbon Steel & LTCS Flanges

Alloy Steel : ASTM A 182-F5, F9, F11, F12, F22 & F91 / Low temp. AS A 350 Lf2.

Carbon Steel : ASTM A 105 ASTM A 694 F42, F46, F52, F60, F65, F70

Copper & Nickel Alloys Flanges

Cupronickel : C70600(90:10), C71500 (70:30), C71640

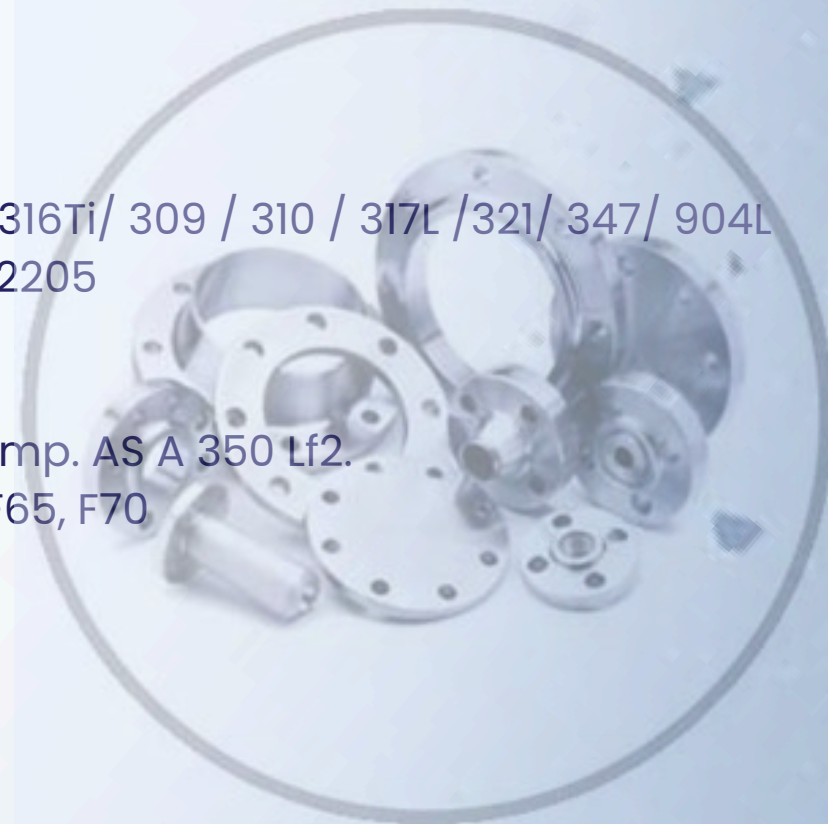
Nickel : UNS N02200, N02201

Monel : UNS N04400, N05500, Alloy 20

Inconel : UNS N06600, N06601, N06625, N08800, N08810

Hastelloy : UNS N10276, N06022, N10665, N06455

Titanium : Gr. 2 &5, DTH 3.7025, DTH 3.7055



PIPES

Size : 3/8" NB to 24" NB (seamless) 1/2"to 72" welded

Wall Thickness : Sch. Ss to Sch. XXS

Stainless Steel : ASTM / ASME SA 312Gr. TP 304, 304L,304H, 309S, 309H, 310, 310H,316, 316Ti, 316H, 316LN,317,317L,321,321H,347,347H,904L

Duplex Steel : ASTM / ASME SA 790 UNS No.: 31803 / 32760

Carbon Steel : ASTM / ASME A53Gr. A&B, ASTM A106 Gr. A,B & C. API SL Gr. B, API SL X42, X46, X52, X60, X65 & X70. ASTM / ASME A691Gr. A,B &C

Alloy Steel : ASTM / ASME A 335 Gr. P1, PS, P9, P11, P12, P22, P23, P91

Cupronickel : 70:30 & 90: 10

Aluminum Alloys : 2014, 2024, 5052, 5083, 5086, 6061, 6063, 6082, 6351,7075



CHEMICAL COMPOSITION OF STAINLESS STEEL

Stainless Steel is essentially a low carbon steel which contains chromium at 10% or more by weight. It is this addition of chromium that gives the steel its unique stainless corrosion resisting properties. The corrosion resistance and other useful properties of the steel are enhanced by increased chromium content and the addition of other elements such as molybdenum, nickel and nitrogen.

AISI GRADE	UNS NO.	Chemical Composition of Stainless Steel									Nearest Equivalent Specification		
		EN	BS	C MAX	Mn Max	P Max	S Max	Si Max	Cr	Ni	Mo	Cu	I.S.
201	S20100			0.15	5.5/7.5	0.06	0.03		16.0/18.0	3.5/5.5			
202	S20200			0.15	7.5/10	0.06	0.03		17.0/19.0	4.0/6.0			
301	S30100		301S21	0.15	2.0max	0.045	0.04	1	16.0/18.0	6.0/8.0			10Cr17Ni7
302	S30200			0.15	2	0.045	0.03	1	17.0/19.0	8.0/10.0			07Cr18Ni9
303	S30300		303S31	0.15	2	0.045	0.15 min	1	17.0/19.0	8.0/10.0			15Cr18Ni9
304	S30400	1.4301		0.08	2	0.045	0.03	1	18.0/20.0	8.0/10.0			04Cr18Ni10
304L	S30403	1.4307	304S11	0.03	2	0.045	0.03	1	18.0/20.0	8.0/12.0			02Cr18Ni11
304LN	S30453	1.4306	304S61	0.03	2	0.045	0.03	0.75	18.0/20.0	8.0/11.0			
304H	S30409			0.05	2	0.045	0.03		18.0/20.0	8.5/9.5			
309	S30900		309S16	0.2	2.0max	0.045	0.03	1	22.0/24.0	12.0/15.0			20Cr24Ni12
309S	S30908	1.4833		0.08	2	0.045	0.03	1	22.0/24.0	12.0/15.0			
310H	S31009			0.25	2	0.045	0.03	1.5	24.0/26.0	19.0/22.0			10Cr25Ni12
310S	S31008	1.4845		0.08	2	0.045	0.03	1.5	24.0/26.0	19.0/22.0			
316	S31600		316S31	0.08	2	0.045	0.03	1	16.0/18.0	10.0/14.0	2.0/3.0		04Cr17Ni12Mo2
316L	S31603	1.4404	316S11	0.03	2	0.045	0.03	1	16.0/18.0	10.0/14.0	2.0/3.0		03Cr17Ni12Mo2
316LN	S31653		316S61	0.03	2	0.045	0.03	0.75	16.0/18.0	10.0/14.0	2.0/3.0		
316Ti	S31635	1.4571	320S31	0.08	2	0.045	0.03	1	16.0/18.0	10.0/14.0	2.0/3.0		
317	S31700			0.08	2	0.045	0.03	1	18.0/20.0	11.0/15.0	3.0/4.0		
317L	S31703		317S12	0.03	2	0.045	0.03	1	18.0/20.0	11.0/15.0	3.0/4.0		
317LN	S31753			0.03	2	0.045	0.03		18.0/20.0	11.0/15.0	3.0/4.0		
321	S32100	1.4541	321S31	0.08	2	0.045	0.03	1	17.0/19.0	9.0/12.0			04Cr18Ni10Ti20
347	S34700		347S31	0.08	2	0.045	0.03	1	17.0/19.0	9.0/12.0			04Cr18Ni10Nb-40
904L	N08904	1.4539		0.02	2	0.045	0.035		19.0/23.0	23.0/28.0	4.0-5.0		

CHEMICAL COMPOSITION OF STAINLESS STEEL

Chemical Composition of Carbon Steel/Alloy Steel/ Mild Steel

PIPE SPECIFICATION	C%	Mn%	P% (Max)	S% (Max)	Si% (Max)	Cr%	Ni%	Mo%
ASTM A 106 Gr. A	0.25 Max	0.27-0.93	0.035	0.035	0.10 Min	0.40 Max	0.40 Max	0.15Max
ASTM A 106 Gr. B	0.30 Max	0.29-1.06	0.035	0.035	0.10 Min	0.40 Max	0.40 Max	0.15Max
ASTM A 53 Gr. A	0.25 Max	0.95 Max	0.05	0.045		0.40 Max	0.40 Max	0.15Max
ASTM A 53 Gr. B	0.30 Max	1.20 Max	0.05	0.045		0.40 Max	0.40 Max	0.15Max
ASTM A 333 Gr. 1	0.30 Max	0.40-1.06	0.025	0.025				
ASTM A 333 Gr. 6	0.30 Max	0.29-1.06	0.025	0.025	0.10 Min			0.44-0.65
API 5LGr.A	0.22 Max	0.90 Max	0.03	0.03				
API 5LGr. B	0.22 Max	1.20 Max	0.03	0.03				
ASTM A 335 Gr. P1	0.10-0.20	0.30-0.80	0.025	0.025	0.10-0.50			0.44-0.65
ASTM A 335 Gr. P2	0.10-0.20	0.30-0.61	0.025	0.025	0.10-0.30	0.50-0.81		0.44-0.65
ASTM A 335 Gr. P5	0.15 Max	0.30-0.60	0.025	0.025	0.50 Max	4.00-6.00		0.45-0.65
ASTM A 335 Gr. P9	0.15 Max	0.30-0.60	0.025	0.025	0.25-1.00	8.00-10.00		0.90-1.10
ASTM A 335 Gr. P11	0.05-0.15	0.30-0.60	0.025	0.025	0.50-1.00	100-1.50		0.44-0.65
ASTM A 335 Gr. P12	0.05-0.15	0.30-0.61	0.025	0.025	0.50 Max	0.80-1.25		0.44-0.65
ASTM A 335 Gr. P22	0.05-0.15	0.30-0.60	0.025	0.025	0.50Max	1.90-2.60		0.87-1.13
IS 1239 Part I			0.05	0.05				
IS 3589 Gr. Fe 380	0.16 Max	1.20 Max	0.04	0.04				
IS 3589 Gr. Fe 410	0.20 Max	1.30 Max	0.04	0.04				

STAINLESSSTEELPIPEDIMENSION&WEIGHT-KG.PERMTR.(ANSIB36.19)

Nominal Bore		Outside Diameter	Schedule 5S		Schedule10S		Schedule40S		Schedule80S		Schedule160S		Schedule XXS	
mm	INCH		Wtmm	Weight (Kg/mt)	Wt mm	Weight (Kg/mt)	Wt mm	Weight (Kg/mt)	Wt mm	Weight (Kg/mt)	Wt mm	Weight (Kg/mt)	Wt mm	Weight (Kg/mt)
3	1/8	10.3	1.24	0.276	1.24	0.28	1.73	0.37	2.41	0.47	-	-	-	-
6	1/4	13.7	1.24	0.39	1.65	0.49	2.24	0.631	3.02	0.8	-	-	-	-
10	3/8	17.1	1.24	0.49	1.65	0.63	2.31	0.845	3.2	1.1	-	-	-	-
15	1/2	21.3	1.65	0.8	2.11	1	2.77	1.27	3.75	1.62	4.75	1.94	7.47	2.55
20	3/4	26.7	1.65	1.03	2.11	1.28	2.87	1.68	3.91	2.2	5.54	2.89	7.82	3.63
25	1	33.4	1.65	1.3	2.77	2.09	3.38	2.5	4.55	3.24	6.35	4.24	9.09	5.45
32	1 1/4	42.2	1.65	1.65	2.77	2.7	3.56	3.38	4.85	4.47	6.35	5.61	9.7	7.77
40	1 1/2	48.3	1.65	1.91	2.77	3.11	3.68	4.05	5.08	5.41	7.14	7.25	10.16	9.54
50	2	60.3	1.65	2.4	2.77	3.93	3.91	5.44	5.54	7.48	8.74	11.1	11.07	13.44
65	2 1/2	73	2.11	3.69	3.05	5.26	5.16	8.63	7.01	11.4	9.53	14.9	14.2	20.39
80	3	88.9	2.11	4.51	3.05	6.45	5.49	11.3	7.62	15.2	11.1	21.3	15.24	27.65
100	4	114.3	2.11	5.84	3.05	8.36	6.02	16.07	8.56	22.3	13.49	33.54	17.12	41.03
125	5	141.3	2.77	9.47	3.4	11.57	6.55	21.8	9.53	31.97	15.88	49.11	19.05	57.43
150	6	168.3	2.77	11.32	3.4	13.84	7.11	28.3	10.97	42.7	18.2	67.56	21.95	79.22
200	8	219.1	2.77	14.79	3.76	19.96	8.18	42.6	12.7	64.6	23	111.2	22.23	107.8
250	10	273.1	3.4	22.63	4.19	27.78	9.27	60.5	12.7	96	28.6	172.4	25.4	155.15
300	12	323.9	3.96	31.25	4.57	36	9.52	73.88	12.7	132	33.32	238.76	25.4	186.97
350	14	355.6	3.96	34.36	4.78	41.3	11.13	94.59	12.7	158.08	35.71	281.7	-	-
400	16	406.4	4.19	41.56	4.78	47.29	12.7	123.3	12.7	203.33	40.46	365.11	-	-
450	18	457.2	4.19	46.8	4.78	53.42	14.27	155.8	12.7	254.36	45.71	466.4	-	-
500	20	508	4.78	59.25	5.54	68.71	15.09	183.42	12.7	311.2	49.99	564.68	-	-
600	24	609.6	5.54	82.47	6.35	94.45	17.48	255.41	12.7	442.08	59.54	808.22	-	-

Customer List

We are currently and regularly serving the following customers....

1. SIMON INDIA LIMITED / PARADEEP PHOSPHATES LIMITED, ODISHA
2. FLOWZONE ENGINEERING SOLUTIONS
3. S P ENTERPRISE
4. SHRI ANTU PUMPS
5. FLOSYS PUMPS PVT LTD
6. LIFTON CHAINS AND TACKLES PVT LTD
7. METCON PIPE & FITTINGS CO
8. PETREGAZ KRISHNAPATNAM PVT LTD

We can also supply under the following Third Party inspection Agencies

1. SGS INDIA PRIVATE LIMITED
2. BUREAU VERITAS (INDIA) PVT LTD
3. TUV INDIA PRIVATE LIMITED

Office Address

E Wing, Flat No. 1006, Sterling Heights, Madhubantownship,
Vasai east, Dist. Palghar, Pinno. 401208, Maharashtra, INDIA

Work Shop Address

Survey No. 106/1, Unit No. 5, Manicha Pada, Rehard Compound, Vasai Fata,
Vasai East, Dist. Palghar -401208 INDIA

Mob. No. +91 9225575690

Mr. Krishna Pandey (Owner)

